

# Tolovana Watershed Prioritization File Index

Description	Links to files	(click here ↓)
-------------	----------------	----------------

DOCUMENTS

**Data Dictionary Table:** table explaining conservation and limiting factors evaluated for watershed mapping. PDF with basic factors listed, PDF with details of scoring methods, source information, and hyperlinks; and an MS-Excel file of all factors that were used or considered in the prioritization



Basic Factors List

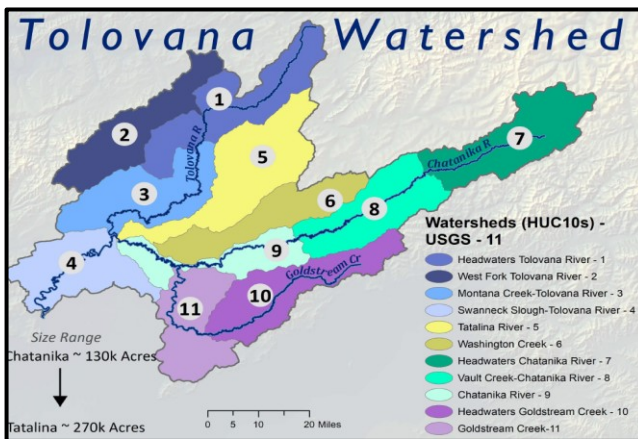


Detailed Factors with Links



Data Dictionary Table (Excel)

**Mapping Unit of Measure selection** - a series of maps highlighting differing mapping units considered for prioritization: HUC10 watersheds, HUC12 sub watersheds, parcels,



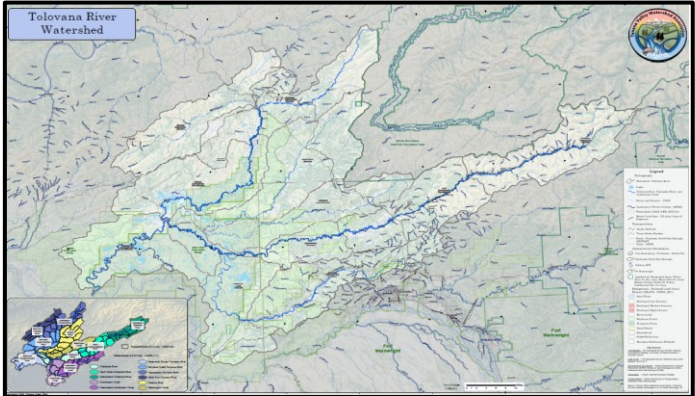
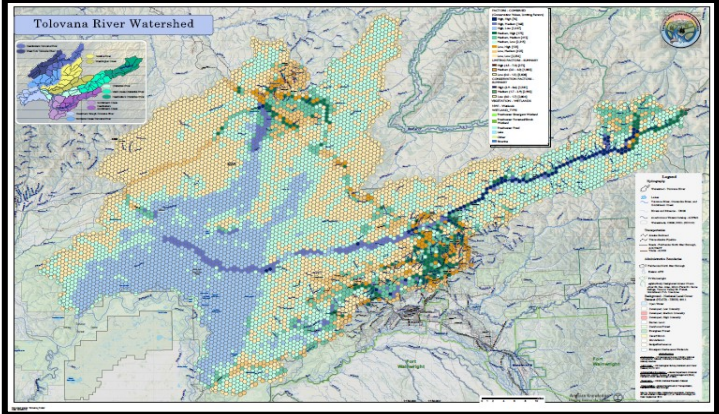
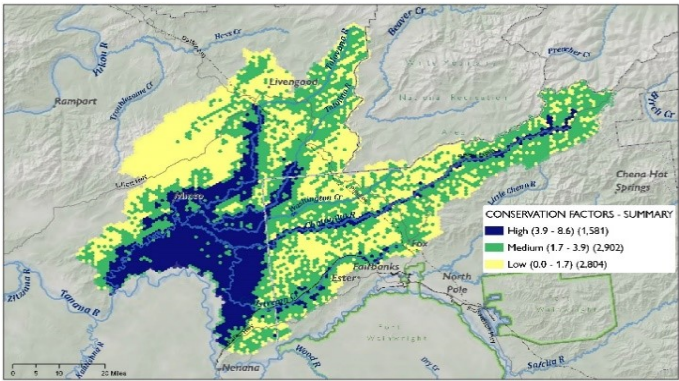
**Instructions for Using PDF maps** step-by-step guidance for toggling data on/off with layered pdfs, how to use the geospatial tool, and how to measure distances and areas in Adobe Reader.

**Layered PDF Instructions**

- 1) Open Map in Adobe Reader or Acrobat

- 2) Click Layers button along left-hand margin which looks like a stack of papers
- 3) Click ">" symbol next to Main Map folder icon which opens the folder of layers and

## Tolovana Watershed Prioritization File Index

Description	Links to files (click here ↓)
<p><b>Tolovana Watershed Overview</b>  <b>Poster:</b> map at 1:165,000 scale, 1 inch = 2.6 miles; printed dimensions 56"x36"</p>	
<p><b>M A P S</b> <b>Tolovana Watershed Poster with Conservation Values and Limiting Factors:</b> map scored at 1/2 square mile hexagons (320 acres) at 1:165,000 scale, 1 inch = 2.6 miles; printed dimensions 56"x36"</p>	
<p>Tolovana Watershed with <b>11 separate Conservation Values</b> scored</p>	



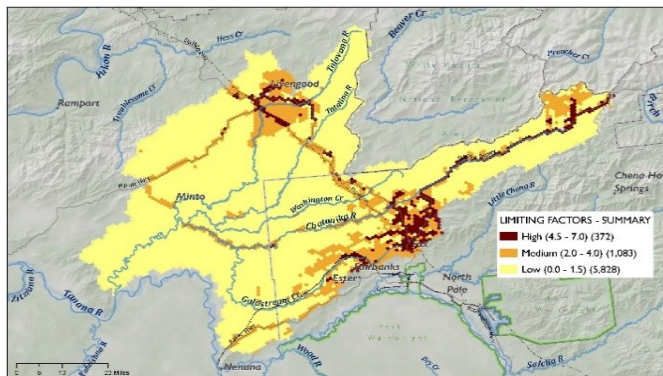
# Tolovana Watershed Prioritization File Index

Description

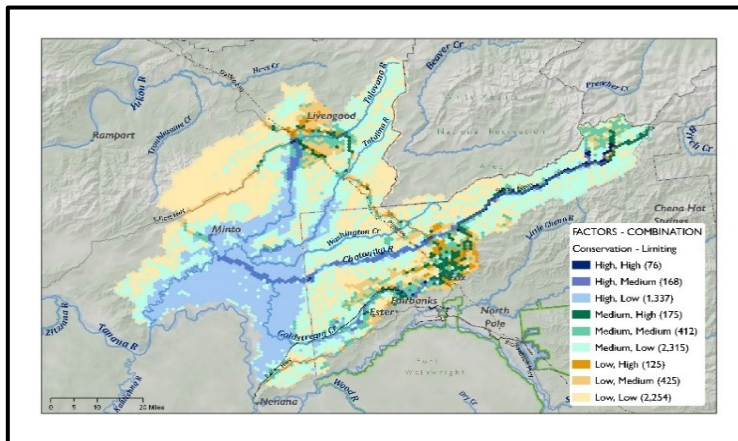
Links to files

(click here ↓)

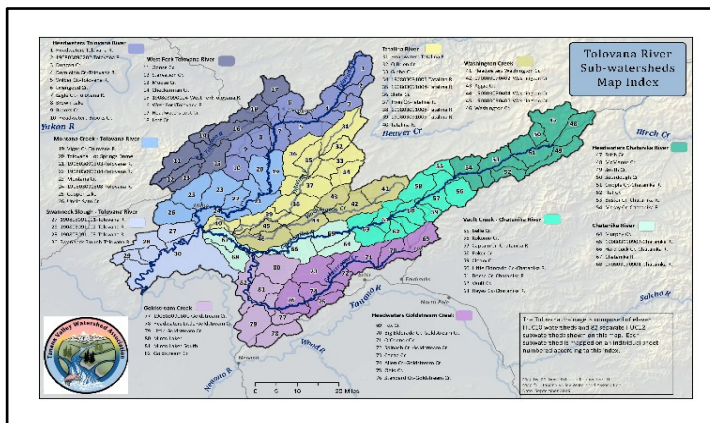
Tolovana Watershed with 11 separate Limiting Factors.



Tolovana Watershed with Conservation Values and Limiting Factors Combined.



Sub watershed Index Map for 63 individual maps of the Tolovana/Piledriver Drainage mapped at sub watershed scale (HUC12). Physical dimension is 11"x17" as are the individual sub watershed maps. They are numbered and organized by watershed (HUC10)



M  
A  
P  
S

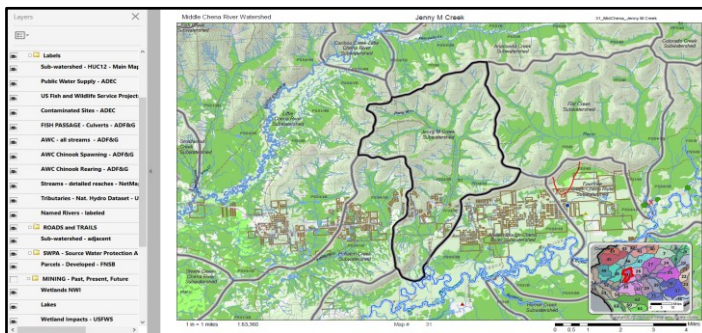
# Tolovana Watershed Prioritization File Index

Description

Links to files

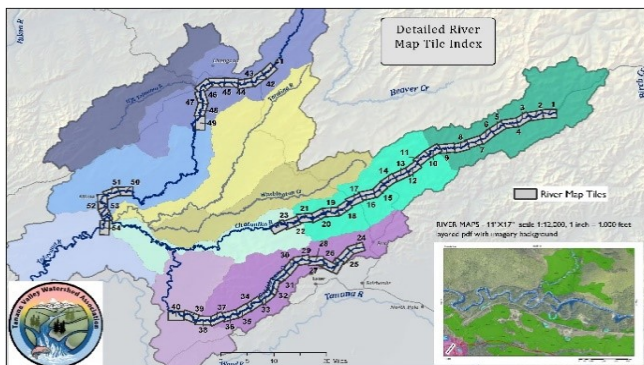
(click here ↓)

**Sub watershed Maps:** 82 Individual HUC12 maps mostly at 1:63,360 scale, 1 inch = 1mile with 19 larger watersheds mapped at scales ranging from 1:80,000 - 130,000. Physical dimensions are 11"x17". Map files are: bundled by watershed (HUC10). All maps are layered pdfs allowing user to turn data layers on or off.

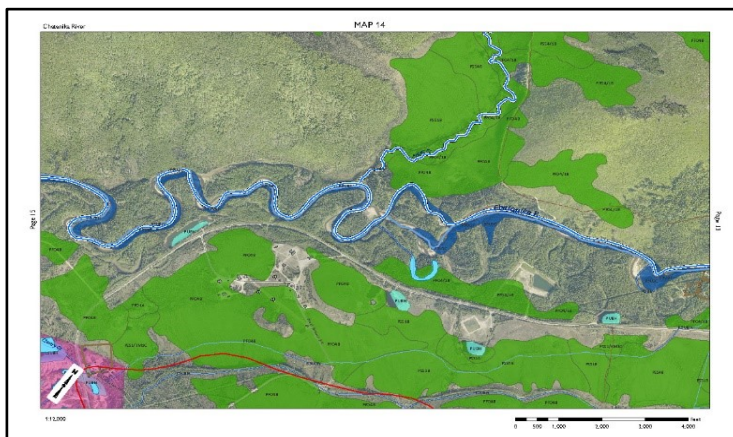


M  
A  
P  
S



**River Map Index:** index map for detailed layered pdf maps with imagery background at a scale of 1:12,000, 1 inch = 1000 feet, Physical dimensions 11"x17"



**River Maps:** Layered PDF Maps follow rivers at scale of 1:12,000 1 inch = 1000 feet. Physical dimensions 11"x17". Total of 55 separate maps



## Tolovana Watershed Prioritization File Index

Description	Links to files (click here ↓)
<p><b>D A T A</b></p>	<p><b>Tolovana WRAP Summary Data: polygon dataset with 7287 hexagons</b> with values for each of the 9 Conservation factors and 8 Limiting Factors, ArcGIS layer package (.lpk file), unpacks to file geodatabase</p> <div style="border: 1px solid black; padding: 5px; margin: 10px 0;"> <input checked="" type="checkbox"/> Conservation Values &amp; Limiting Factors              ConservationValue_Category, LimitingFactors_Category             <ul style="list-style-type: none"> <li>■ High, High</li> <li>■ High, Medium</li> <li>■ High, Low</li> <li>■ Medium, High</li> <li>■ Medium, Medium</li> <li>■ Medium, Low</li> <li>■ Low, High</li> <li>■ Low, Medium</li> <li>■ Low, Low</li> </ul> </div> <p><b>Tolovana Map Package:</b> ArcMap project with basic scored hexagon data (.mpk file - unpacks to a .mxd in 10.1 or 10.6 versions)  <a href="#">TolovanaWRAP_MAP_export.mpk</a></p> <p>Tolovana Prioritization -  <b>Google Earth file</b> : kml file of 7268scored hexagons</p>
	 <h1 style="margin: 0;">ArcGIS</h1>
	<p><b>Google Earth</b></p> 

Notes: mapping, data assembly, and analysis performed by Marcus Geist of Artesian Knowledge LLC, of Anchorage, Alaska in cooperation with the Tanana Valley Watershed Association staff, workshop participants, and project funders at the US Fish and Wildlife Service, Fairbanks, Alaska